

October 5, 1995

Introduced By: GREG NICKELS
PETE VON REICHBAUER

Proposed No.: 95 - 759

ORDINANCE NO. **12107**

AN ORDINANCE appropriating \$69,000 of 1991 Conservation Futures Tax levy funds to the Conservation Futures Fund to purchase property for the City of Federal Way's East Federal Way 1989 Open Space Bond project and amending Ordinance 11578, Section 117 and Attachment 1B, as amended.

BE IT ORDAINED BY THE COUNCIL OF KING COUNTY:

SECTION 1. There is hereby approved and adopted an appropriation of \$69,000 to the Conservation Futures Fund for purchase of property for the City of Federal Way's East Federal Way 1989 Open Space Bond project.

SECTION 2. Ordinance 11578, Section 117, as amended, is hereby amended by adding thereto and inserting therein the following:

From the several capital improvement projects funds there are hereby appropriated and authorized to be disbursed the following amounts for the specific projects identified in Attachment No. 1B of this ordinance:

<u>Fund</u>	<u>Capital Fund</u>	
315	Conservation Futures	\$69,000

SECTION 3. Ordinance 11578, Section 117, Attachment 1B, as amended, is hereby amended by adding thereto and inserting therein the following:

<u>Fund</u>	<u>Project</u>	<u>Description</u>	
3151	315722	Federal Way CFL	\$69,000

1
2
3
4
5
6
7
8
9
10
11
12
13
14
15
16
17
18
19
20
21
22
23
24
25
26
27
28

SECTION 4. The attached resource book page is hereby adopted.

INTRODUCED AND READ for this first time this 6th day of November 1995.

PASSED by a vote of 12 to 0 this 8th day of January 1996.

KING COUNTY COUNCIL
KING COUNTY, WASHINGTON

Jane Hague
Chair

ATTEST:

Ronald A. Peterson
Clerk of the Council

APPROVED this 19th day of January 1996.

Sam Locke
King County Executive

Project: 315722 Federal Way Conservation Futures

Council District(s): 12 CIP Planning Area(s): COUNTY WIDE

Status:

Description:

Pursuant to Ordinance 9128, which was approved by the King County Council in September of 1989, \$7,000 of Conservation Futures Levy (CFL) proceeds were appropriated to the City of Federal Way for initial acquisition costs for the S. W. 363rd St. (10th - 14th S. W.) Project, which was included in the 1989 Open Space Bond.

During 1991, the King County Council approved Motion 8361, which allocated \$100,000 of Conservation Future Levy proceeds to the City of Federal Way. Funds will be applied toward acquisition of the S.W. 363 from 12-14th Ave. Open Space Bond project.

In 1992 \$100,000 of 1991 Conservation Future Levy funds were added for acquisition of properties for the Adelaide/Lakota project.

*IN 1993 ADALAIDE/LAKOTA PROJECT WAS ABANDONED
DURING 1995 \$12,000 PLUS INTEREST WAS RETURNED TO THE CONSERVATION FUND
AND \$69,000 WAS AWARDED FOR PURCHASE OF PROPERTY FOR THE EAST FEDERAL WAY PROJECT.*

Funds appropriated for 1992 to be expended on designated project.

Cost Data:

Cost Estimate (1992): \$207,000
Net Annual Operating Costs: not available

- No Changes To Be Abandoned To Be Merged Total Cost Change Site Change
 New Revenue Change Scope Change Schedule Change In-House Labor 003

Project Data:

FUND	3151	CONSERV FUTURES SUB-FUND	DEPARTMENT PRIORITY REQUEST	0	PRINTED	OCTOBER	1994
DEPARTMENT	0349	CONSERVATION FUTURES	LOCATION -				
FUNCTION	53300	PARKS & RECREATION	CURRENT PROJECT COST ESTIMATE				207000
SERVICE	53350	PARKS CIP	EXPENDED & APPROPRIATED (INC RECOMMENDED)				207000
PROGRAM	53383	CONSERV.FUTURES:SUB.CITY	FUTURE FUNDING REQUIRED TO COMPLETE PROJECT				0

OPTION	EXPENDITURES TO 12/31/83 (A)	5 MONTH ACTUAL EXPENDITURES			* PROGRAM PROJECTIONS IN THOUSANDS *					PROGRAM TOTAL	OPTION - ACCOUNT TOTAL	
		94 BUDGET (B)	95 RECOMMENDED (C)	EXP+BUDGET+ RECOMMENDED (A+B+C)	96	97	98	99	**			
*** EXPENDITURE SOURCES												
002 () ACQUISIT RIGHTWAY	207000	0	0	207000	0	0	0	0	0	0	0	207000
EXPENDITURE TOTALS	207000	0	0	207000	0	0	0	0	0	0	0	207000
*** REVENUE SOURCES												
49999 (A) PRIOR YEARS REVENUE	207000	0	0	207000	0	0	0	0	0	0	0	207000
REVENUE TOTALS	207000	0	0	207000	0	0	0	0	0	0	0	207000
REVENUE AVAILABLE	207000	REVENUE PENDING		0								

12102

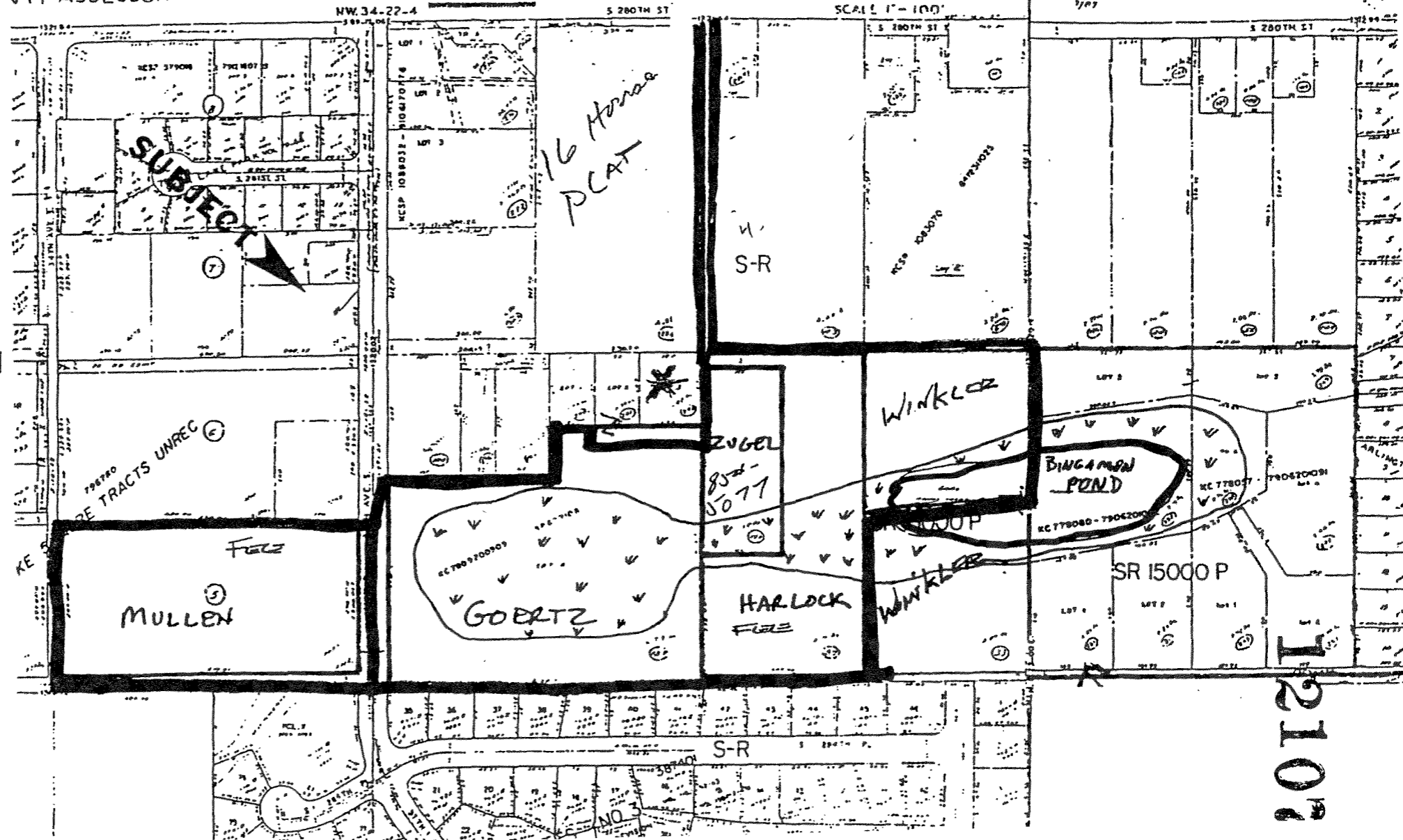
EAST FEDERAL WAY 1989 OPEN SPACE BOND PROJECT

COUNTY ASSESSOR

SW. 34-22-4

KING COUNTY WA

SCALE 1" = 100'



12102